



# Romanian electricity market in the light of fast development of renewable energies.

*General presentation and critical assessment*

Sorin Cebotari,  
PhD Candidate, Babes-Bolyai University, Cluj-Napoca,  
Early Career Researcher ITN Marie Curie Fellowship

# Structure of power delivered to the grid 2010 vs 2014

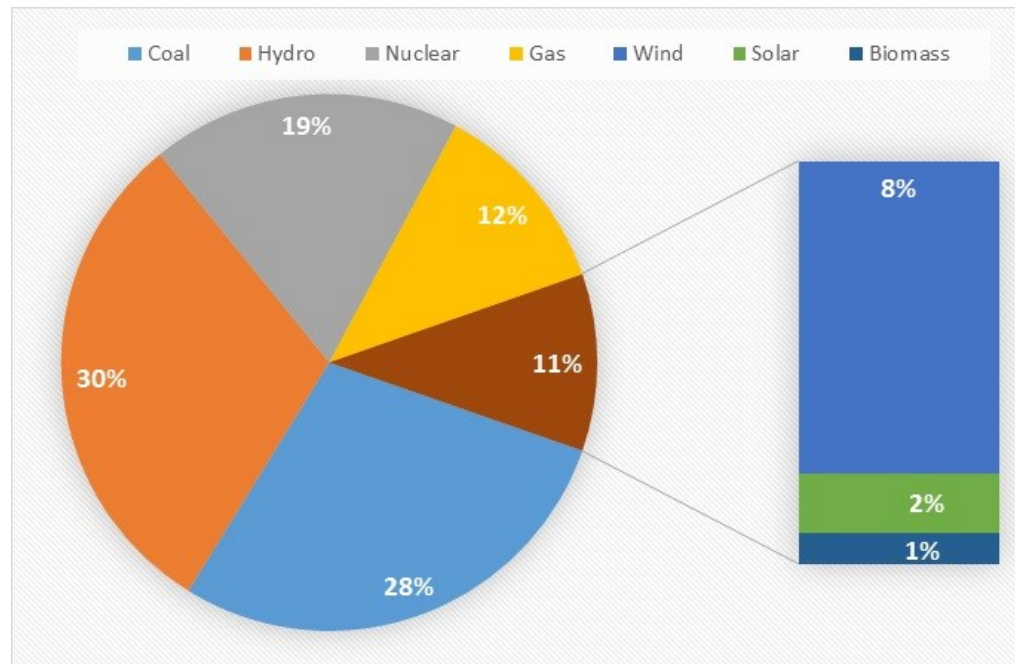


FIGURE 1. THE STRUCTURE OF THE POWER DELIVERED TO THE GRID IN THE PERIOD JAN-2014 – OCT-2014. ROMANIA (TRANSELECTRICA, N.D.)

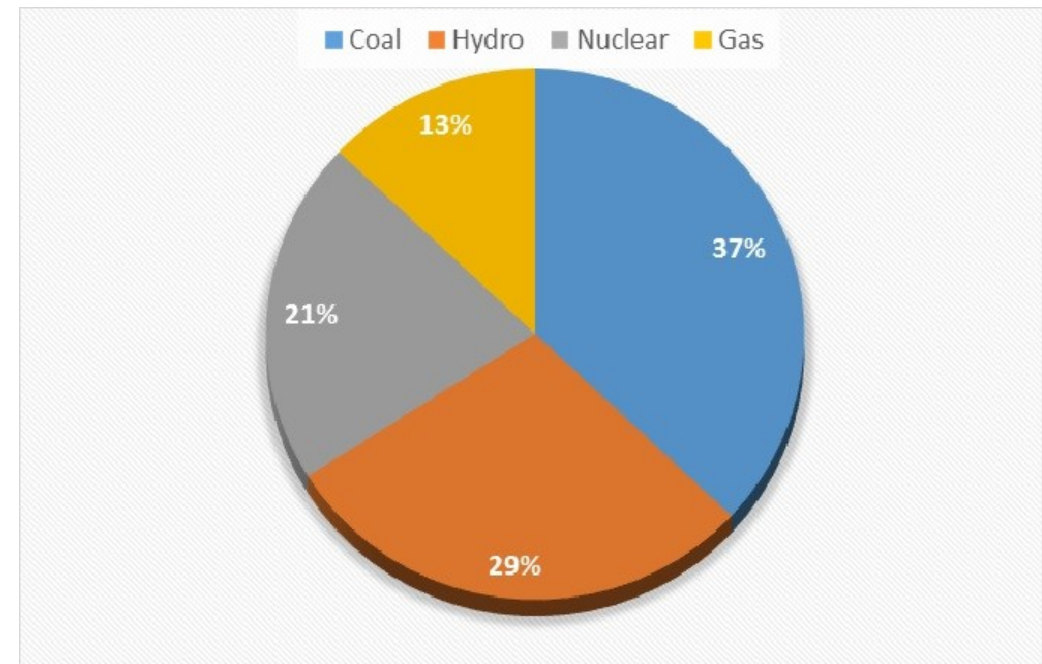


FIGURE 2. THE STRUCTURE OF POWER DELIVERED TO THE GRID IN 2009. ROMANIA (ANRE, 2009)

# Daily generation diagram

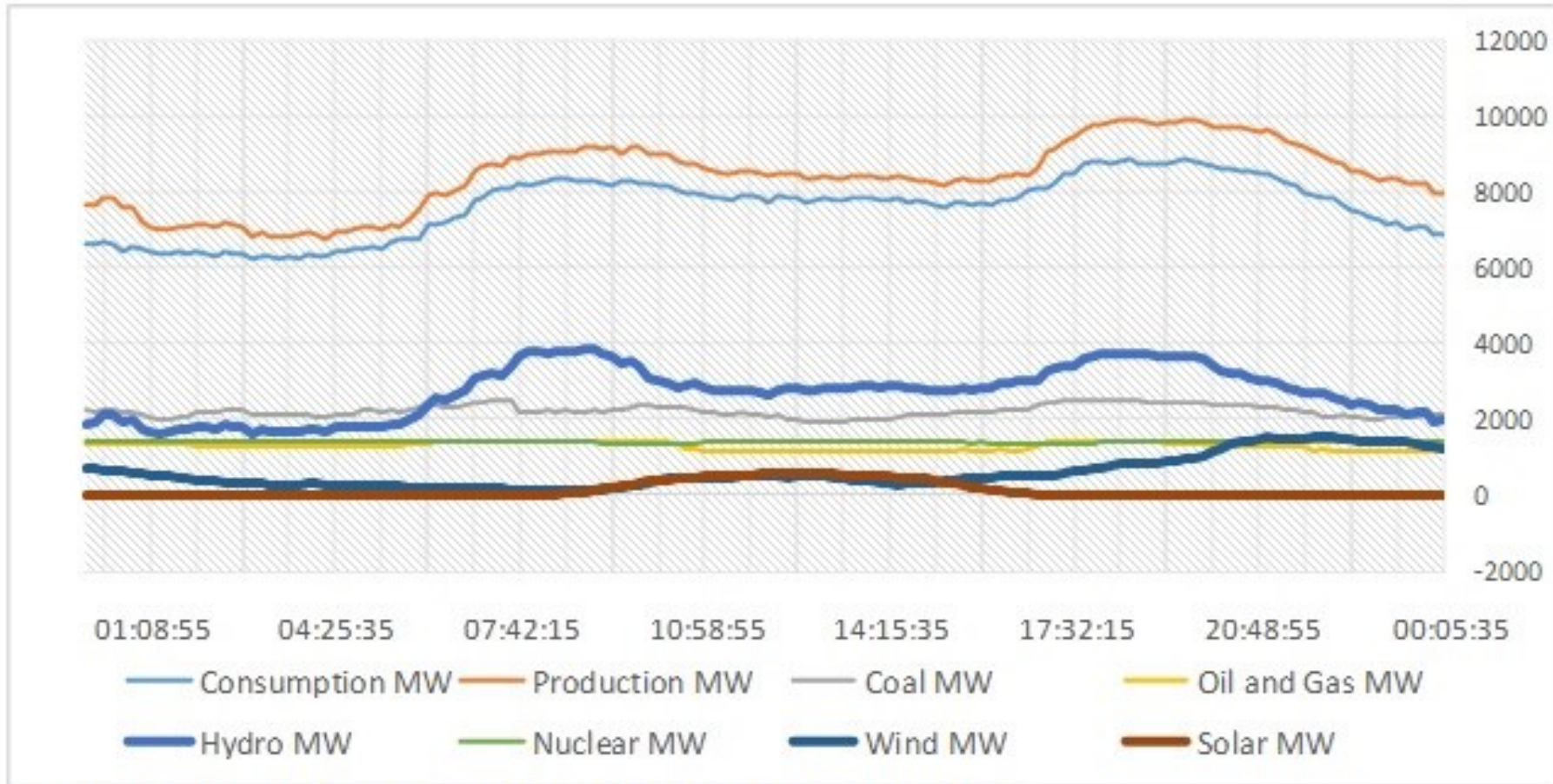


FIGURE 3 DAILY ELECTRICITY GENERATION DIAGRAM. (TRANSELECTRICA, N.D.)



# Electricity Transmission Grids

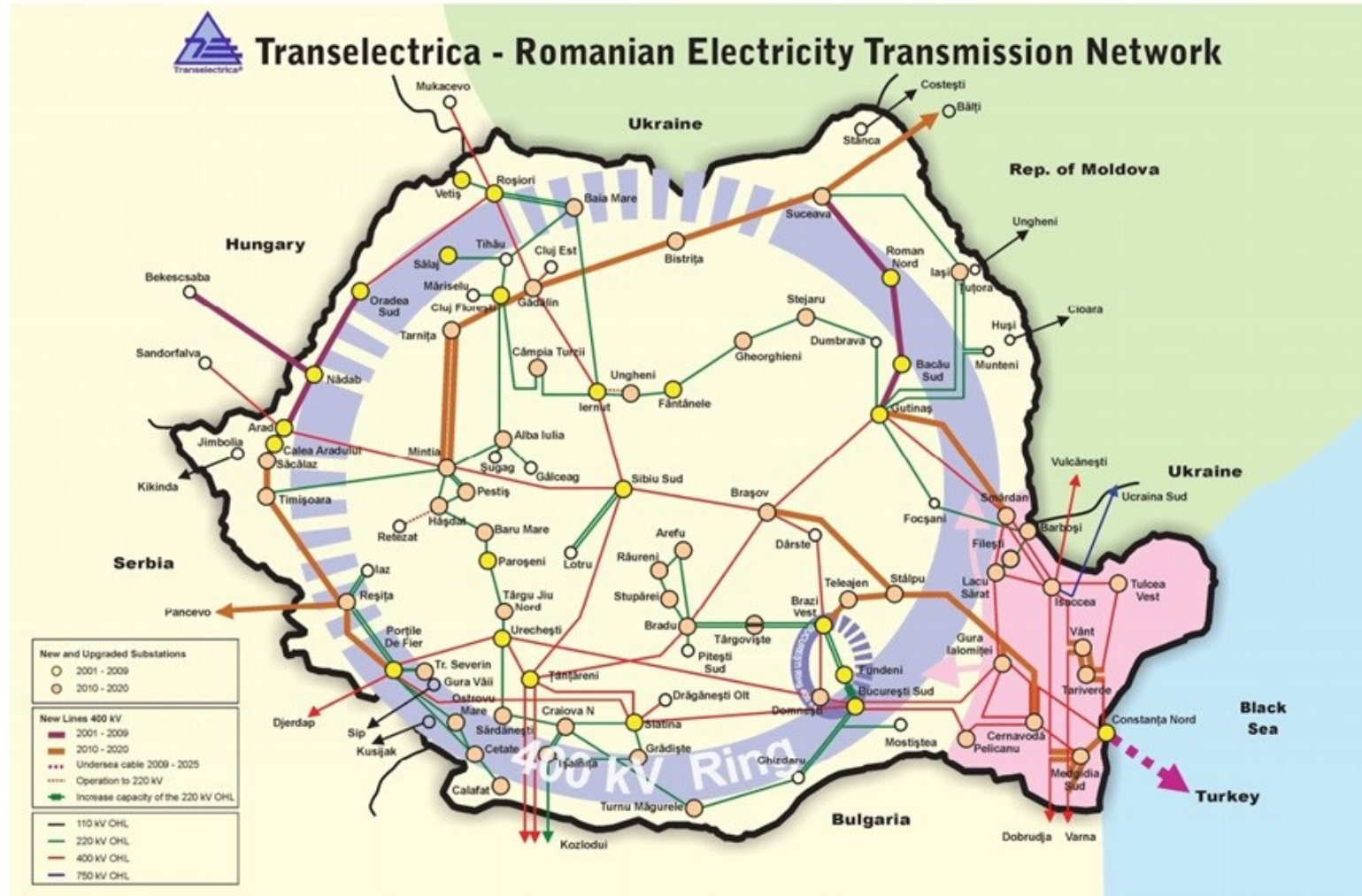


FIGURE 4. ELECTRICITY TRANSMISSION NETWORK. TRANSELECTRICA.

# Quotas of green certificates



Figure 6. Mandatory quotas for green certificates, 2008-2020 (LEGEA Nr. 123/2012 energiei electrice și a gazelor naturale, 2012)

# NUMBER OF ALLOCATE GREEN CERTIFICATES PER GENERATION TYPE

Type of renewable generation	2008-2013	2014-2017	2018-2020
<b>Hydro-power plants<sup>1</sup></b>	3 certificates/MWh for new plants	2.3 certificates/MWh for new plants	
	2 certificates/MWh for refurbished plants		
<b>Wind</b>	2 certificates/MWh	1.5 certificates/MWh	0.75 certificates/MWh
<b>Biomass and Biogas</b>	3 certificates/MWh		
<b>Solar</b>	6 certificates/MWh	3 certificates/MWh	

TABLE 1. NUMBER OF ALLOCATE GREEN CERTIFICATES PER GENERATION TYPE (HG 994/2013, 2014)

Thank you!!!